

# Transducers

<p>C5-2b</p>  <p>2-6MHz Curved Array</p>	<p>C352UB</p>  <p>2-6MHz Curved Array</p>	<p>C612UB</p>  <p>5-10MHz Micro-Convex</p>	<p>P5-1b</p>  <p>2-4MHz Phased Array</p>
<p>L15-7b</p>  <p>7-16MHz Linear Array</p>	<p>L1042UB</p>  <p>8-12MHz Linear Array</p>	<p>L742UB</p>  <p>5-10MHz Linear Array</p>	<p>L552UB</p>  <p>4-8 MHz Linear Array</p>
<p>C422UB</p>  <p>3-6MHz Micro-Convex</p>	<p>C6152UB</p>  <p>4-9MHz Micro-Convex</p>	<p>V562UB</p>  <p>2-9MHz Endorectal</p>	<p>V562UB</p>  <p>3-12MHz Endorectal</p>

## About Edan

Edan is a healthcare company dedicated to improving the human condition around the world by delivering value-driven, innovative and high-quality medical products and services. For over 20 years, Edan has been pioneering a comprehensive line of medical solutions that address a broad range of healthcare practices including:

- Diagnostic ECG
- Patient Monitoring
- OB/GYN
- Ultrasound Imaging
- Point-of-Care Testing
- In-Vitro Diagnostics
- Veterinary

Healthcare professionals around the world depend on Edan's breakthrough medical technologies and outstanding customer support.



Edan Instruments, Inc. | No.15 Jinhui Rd., Jinsha Community,  
Kengzi Subdistrict, Pingshan District, Shenzhen | 518122, P.R. China  
+86.755.26898326 | www.edan.com.cn | info@edan.com.cn

© 2018 Edan Instruments, Inc. All rights reserved. Features and specifications are subject to change without prior notice. No reproduction, copy or transmission may be made without written permission. Not all products or features are available in all countries, contact Edan for local availability.



ENG-US-U60 VET-V1.1-20180305

# U60 VET

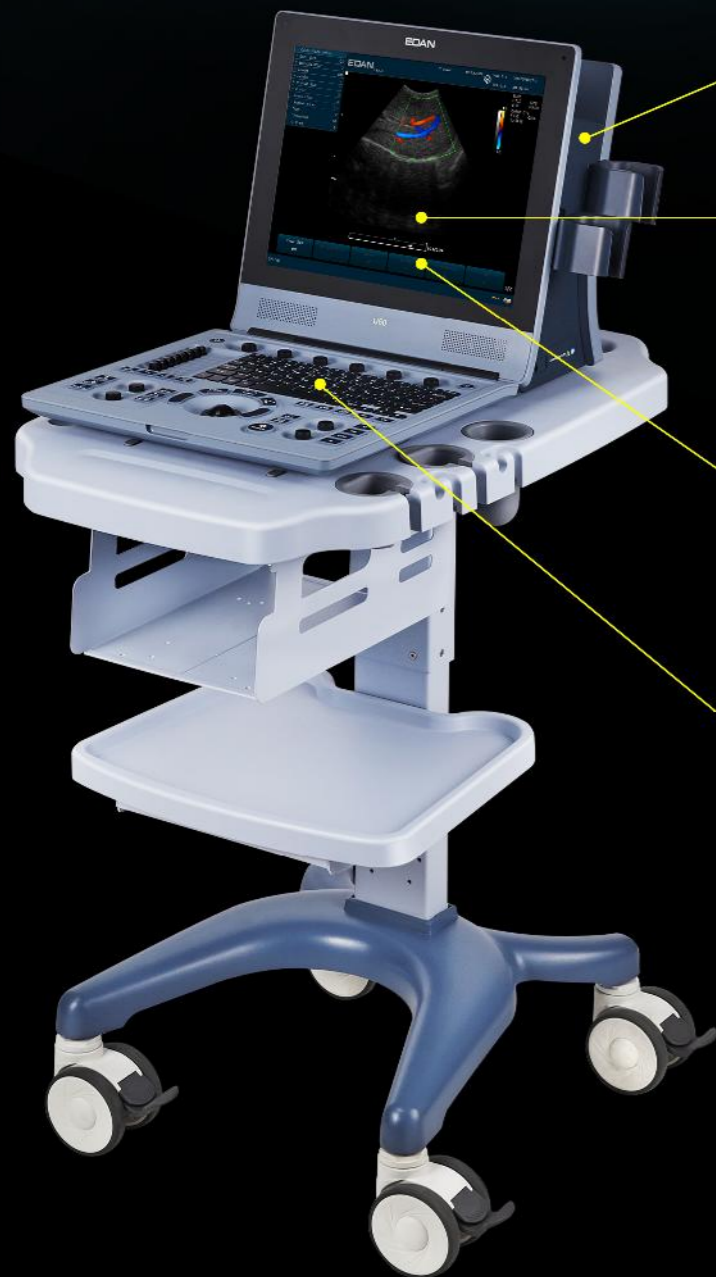
Diagnostic Ultrasound System

## Clear. Compact. Comprehensive



# U60 VET Diagnostic Ultrasound System

With its compact design, user-friendly operation and advanced imaging technologies, the U60 diagnostic ultrasound system offers a broad range of clinical applications to address all of your imaging needs.



## Compact Design

- Compact, lightweight design facilitates mobility
- Integrated battery enables operation anywhere
- Large 15" monitor for easy viewing

## Comprehensive Clinical Applications

- Full set of transducers to support all applications

## Advanced Imaging Technologies

- Tissue Harmonic Imaging
- Spatial Compounding Imaging
- Speckle Reduction Imaging

## User-Friendly Operation

- Backlit, easy-to-use control panel
- Customizable user defined controls
- Large capacity data storage

# Excellent Image Quality

The U60 provides excellent detail, contrast resolution and image uniformity without sacrificing penetration. Excellent color and Doppler sensitivity easily detects small, low flow vessels.



Canine Cardiac Blood Flow



Canine Foldable Gallbladder



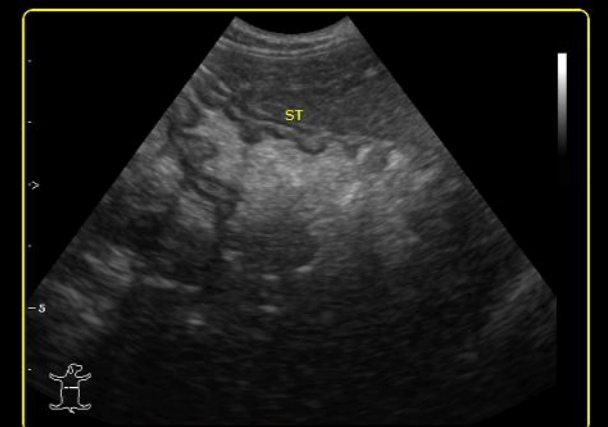
Canine Gallbladder Polyps



Canine Kidney



Canine Liver Artery PW Doppler



Canine Stomach